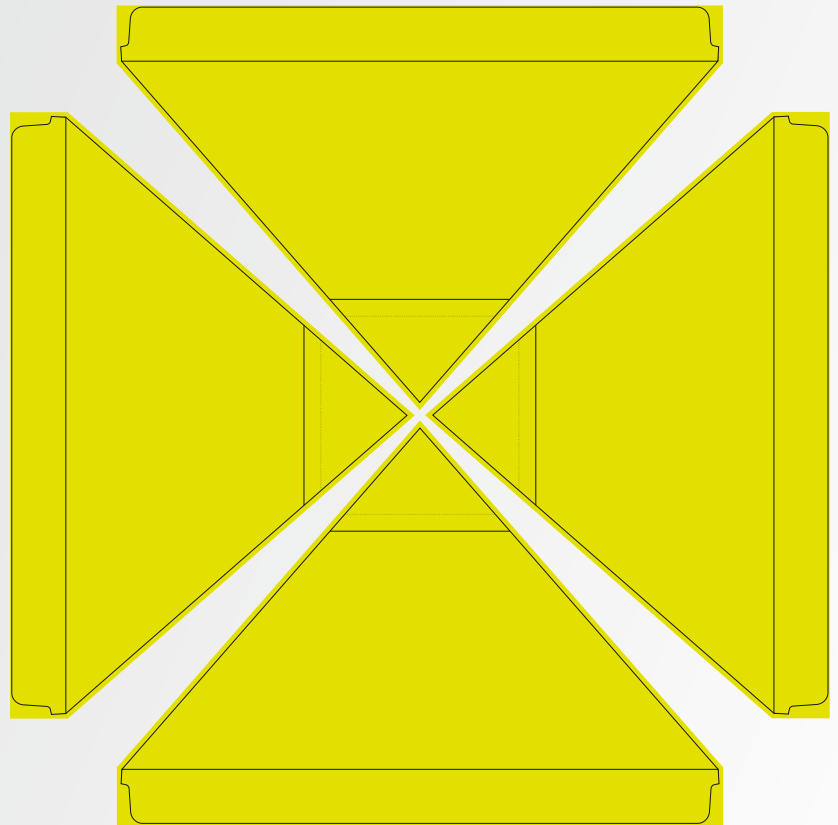
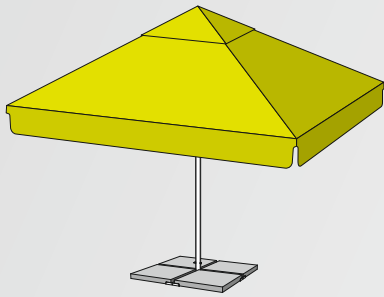


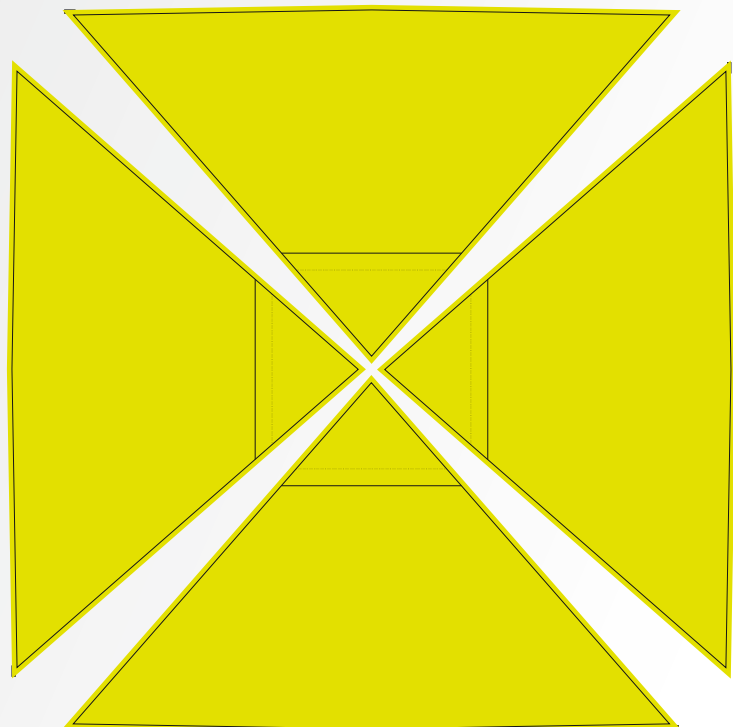
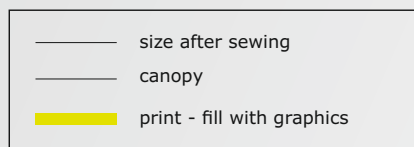
Print data requirements:

- in CMYK without colour management (without ICC profile)
- for the most accurate colours, define colour codes in "Pantone Solid Coated" range. Pantone codes not to be used for shading or transparent transitions
- convert all text data to vectors
- raster resolution of 400-720 DPI
- this template is scaled to 1:10 ratio (do not alter)
- insert your print data into this template and save without changing any settings
- alternatively export into: PDF - maintaining size of the print template and excluding any bleed marks;
AI, PSD (version CC)
CDR (version X6) formats

PLEASE FOLLOW THE ABOVE INSTRUCTIONS FOR SMOOTH PRINT PROCESS OF YOUR DESIGN



parasol Malaga 3,5x3,5m



parasol Malaga 3,5x3,5m without valance

